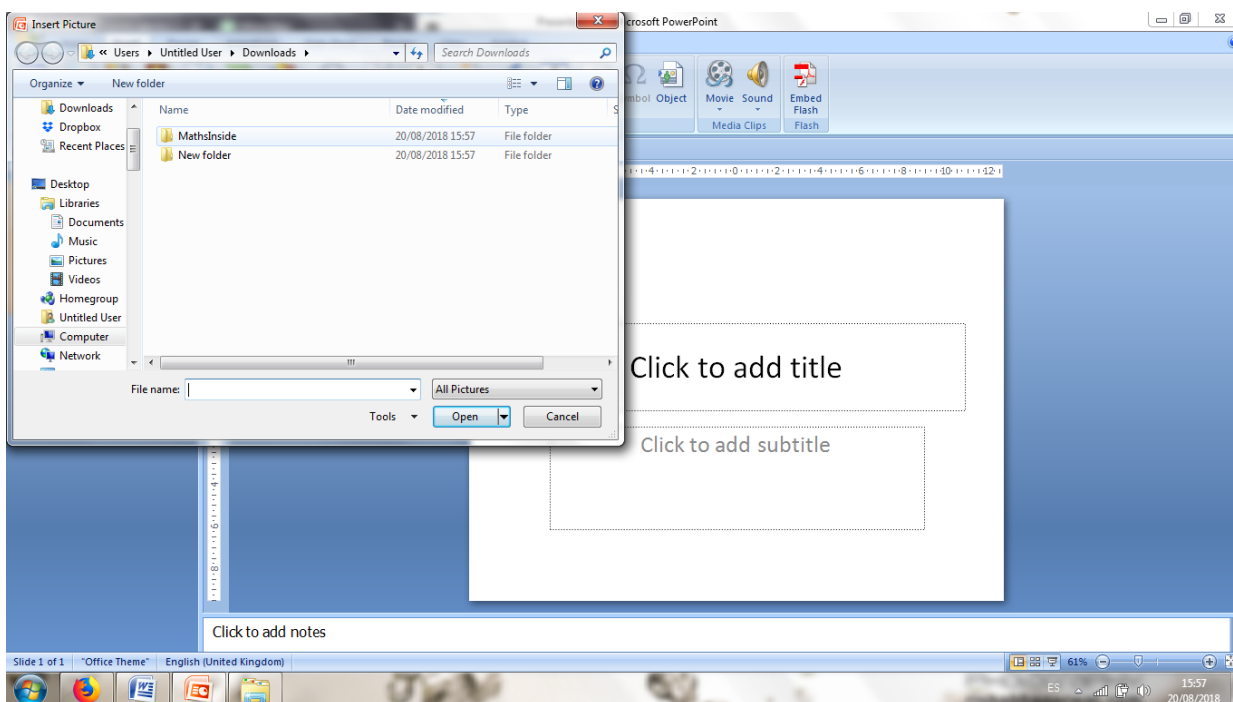
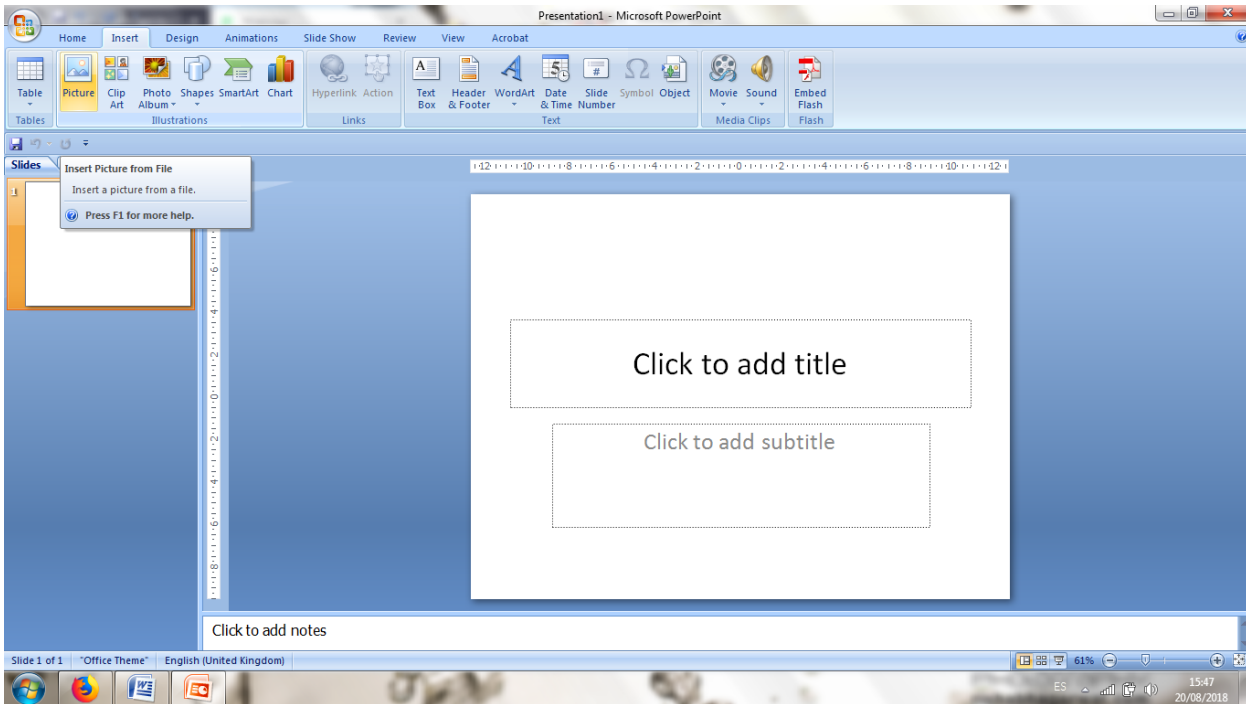


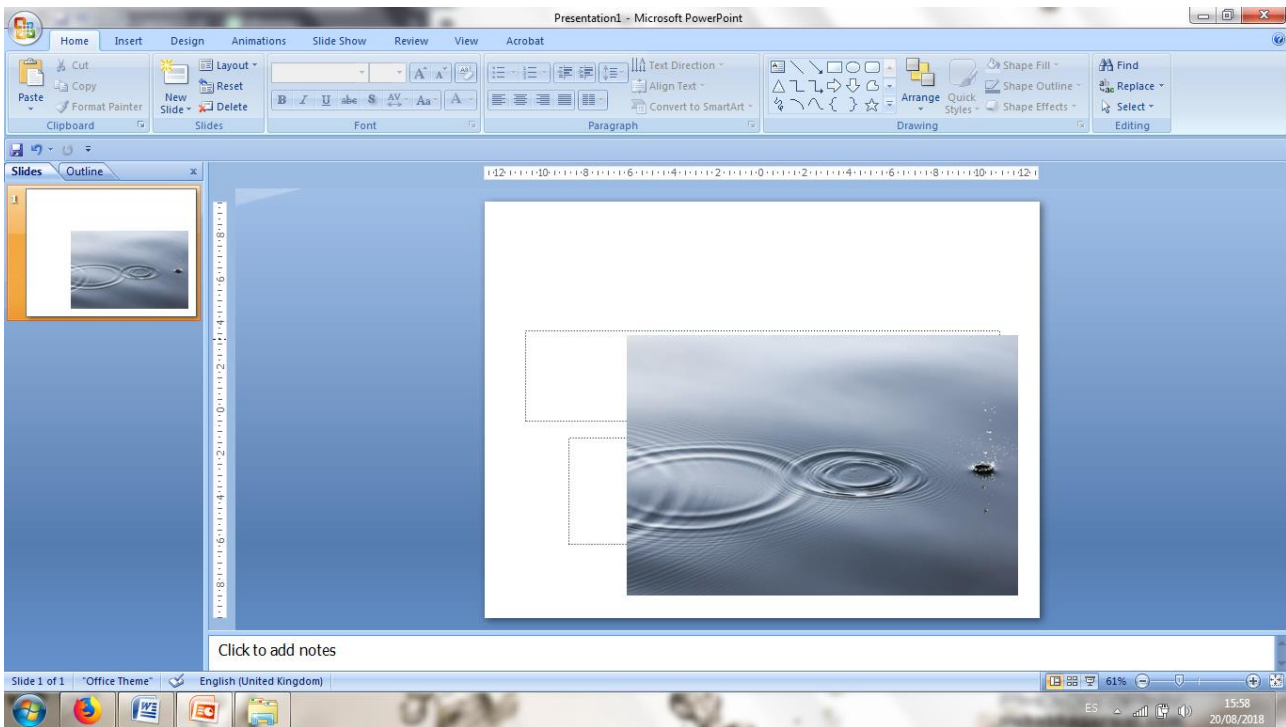
READ ME FILE



Welcome to the *Maths Inside* competition. Below you will find the instructions you need to resize and position your photo and add the *maths inside* sticker. Please note that for this example, we are using Microsoft Power Point 2007. If you use an older or newer version of MS PowerPoint, the steps to follow will be the same but the actual presentation might look slightly different depending on the version you are using.

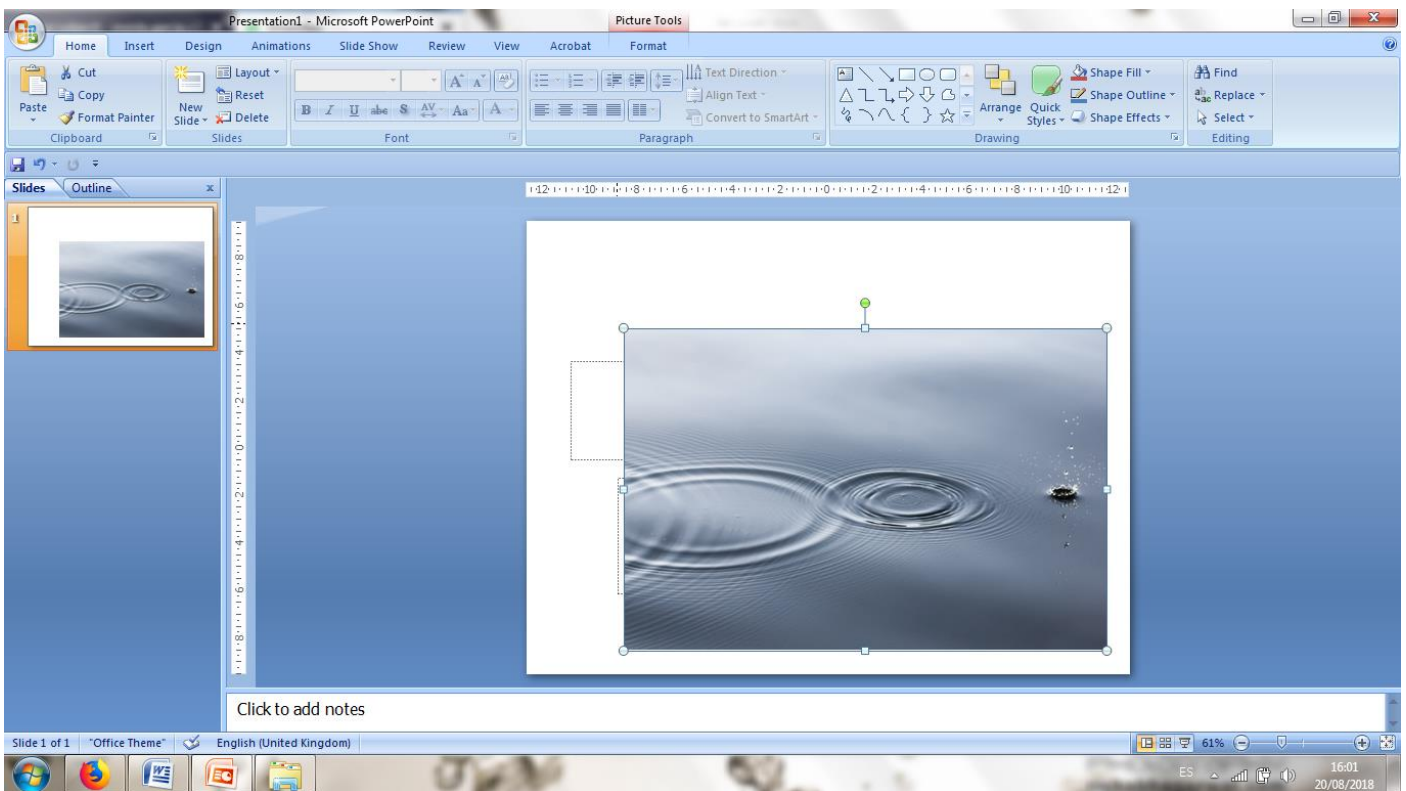
- open MS PowerPoint
- insert your photo with *Insert > Picture > Picture from file*





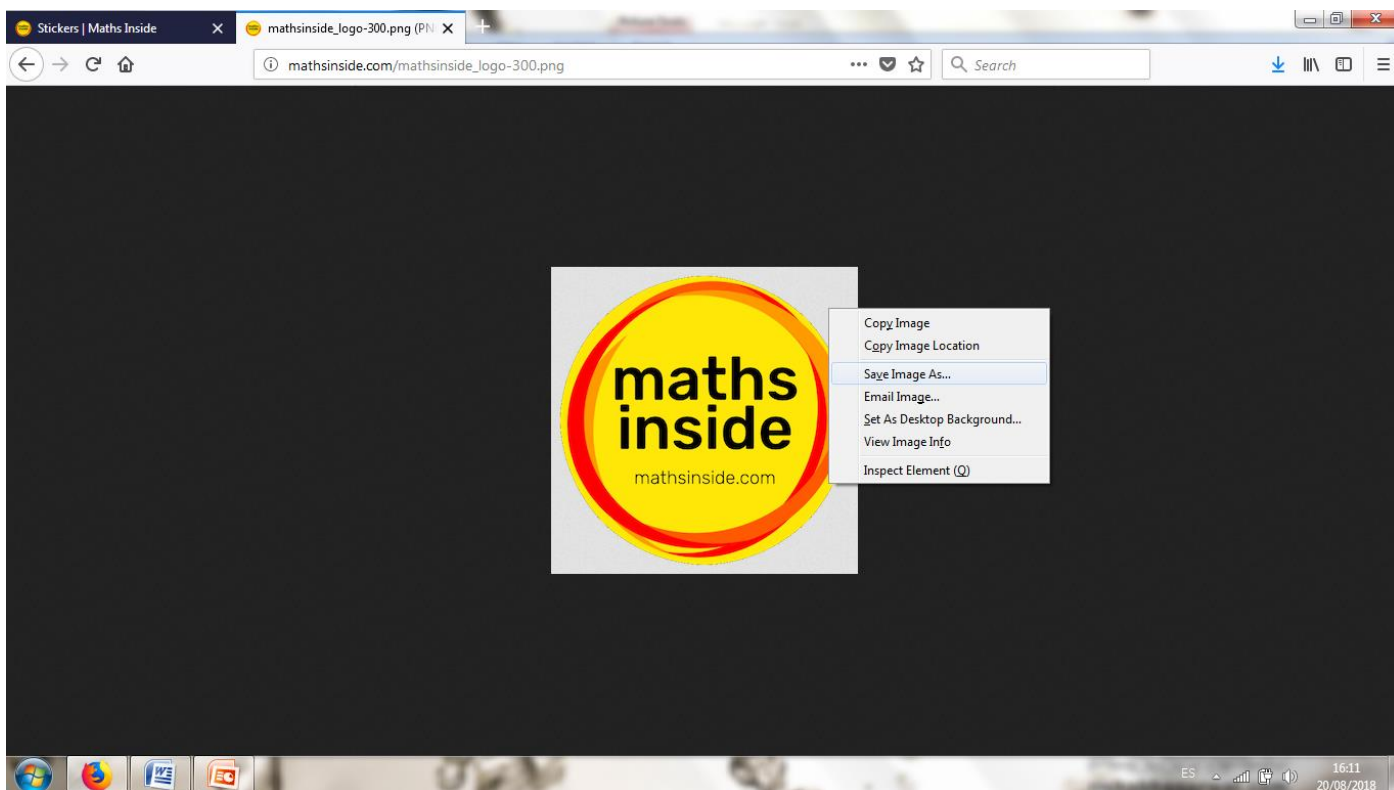
- you can resize so it fits on the slide. Drag from the corners (small transparent circles) instead of dragging from the edges so your picture is not distorted.

[If unsure, watch this PowerPoint image basics video tutorial: <https://www.youtube.com/watch?v=ZmCJxWEyOnk>]

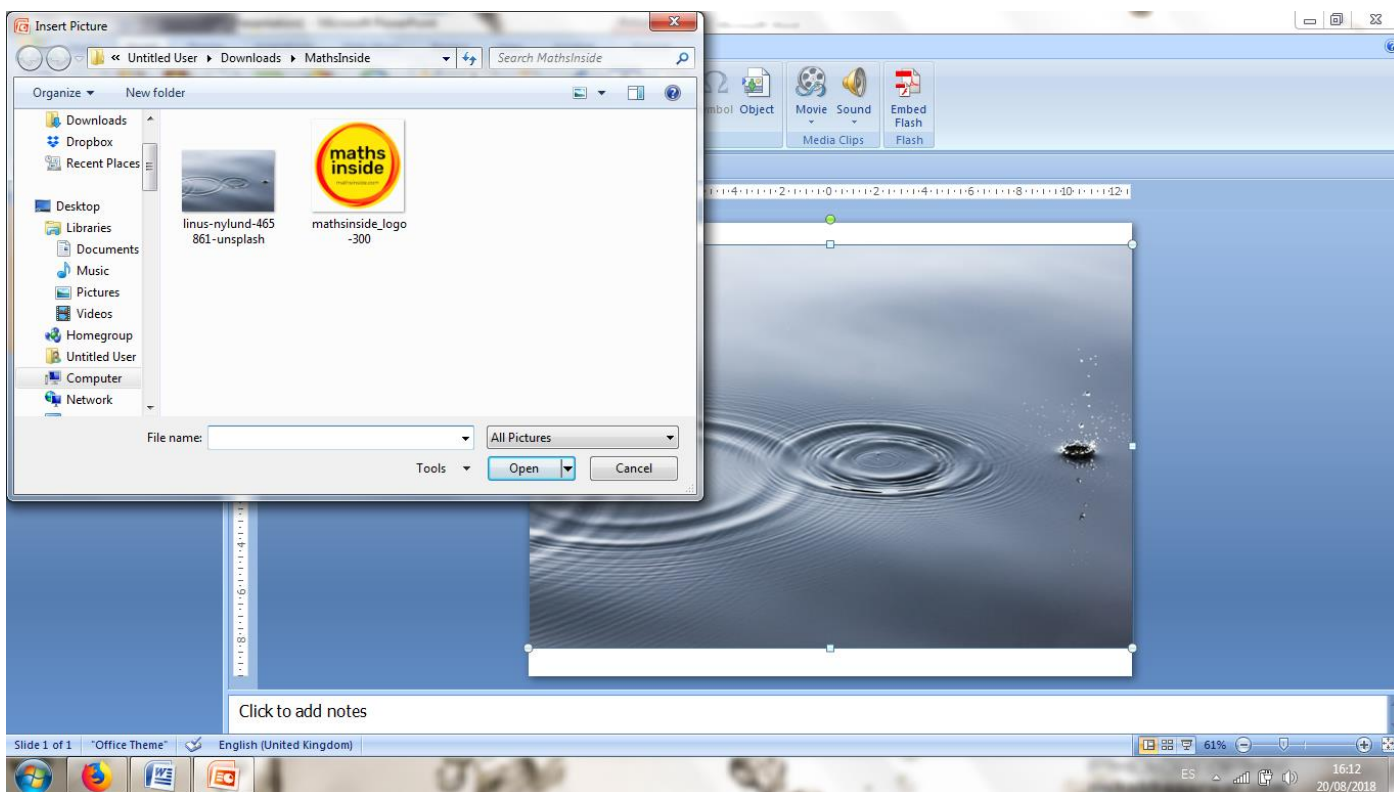


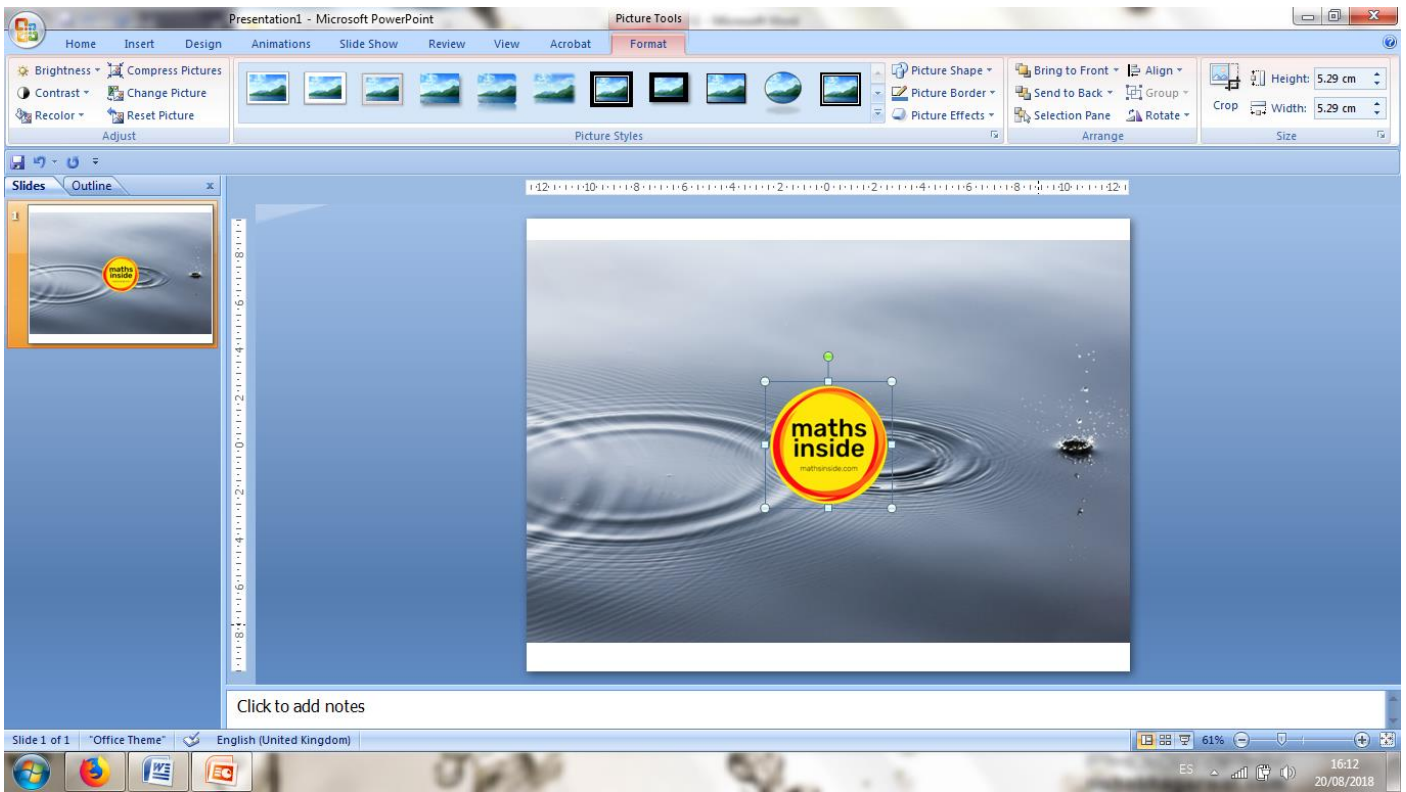
- don't worry about the white background that can be seen on the slide, we will fix that in our last step when you submit
- download the maths inside sticker image <http://mathsinside.com/stickers/> (choose the size you like for your picture, small, medium and large)

- with right click of your mouse save the sticker to your computer/laptop

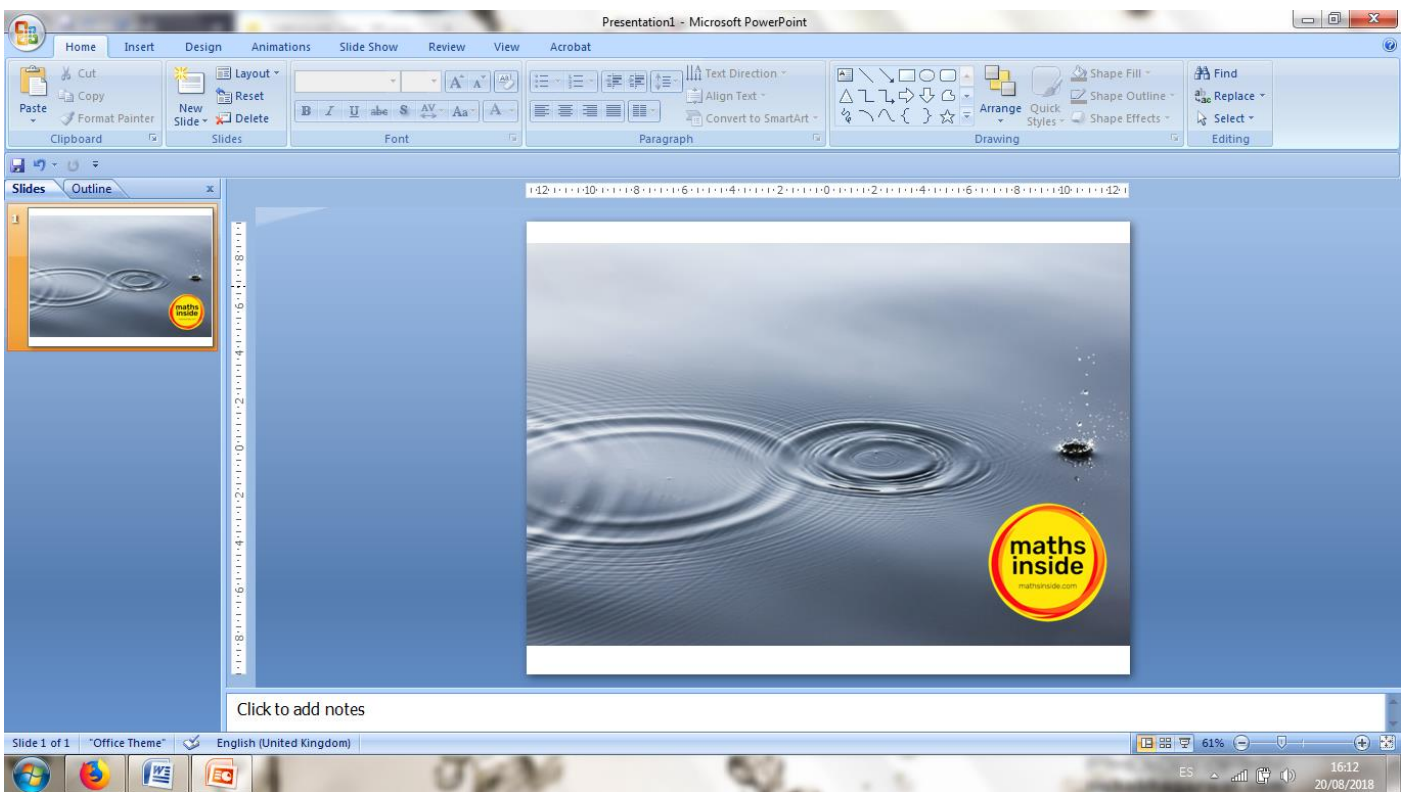


- insert the maths inside sticker image (download above) with *Insert > Picture > Picture from file*

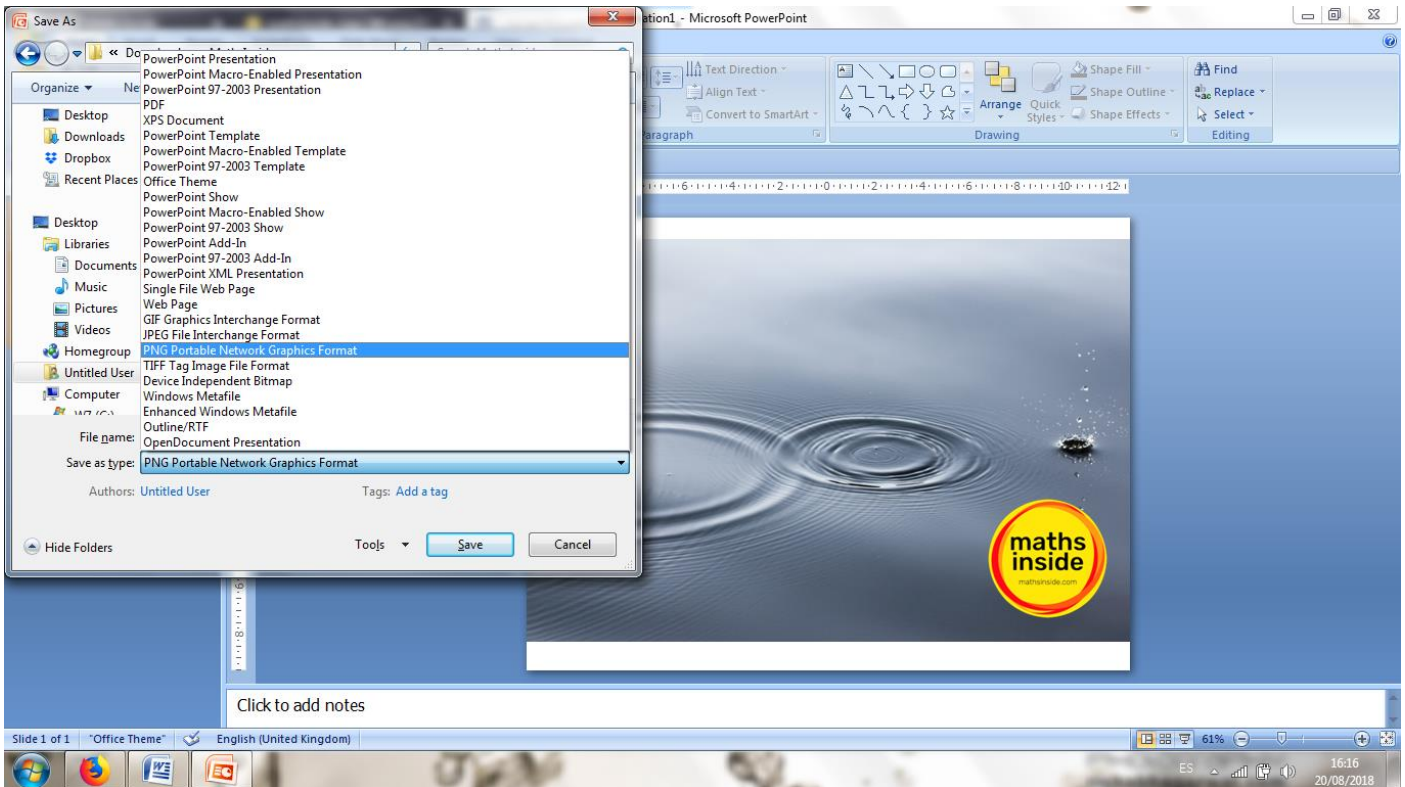
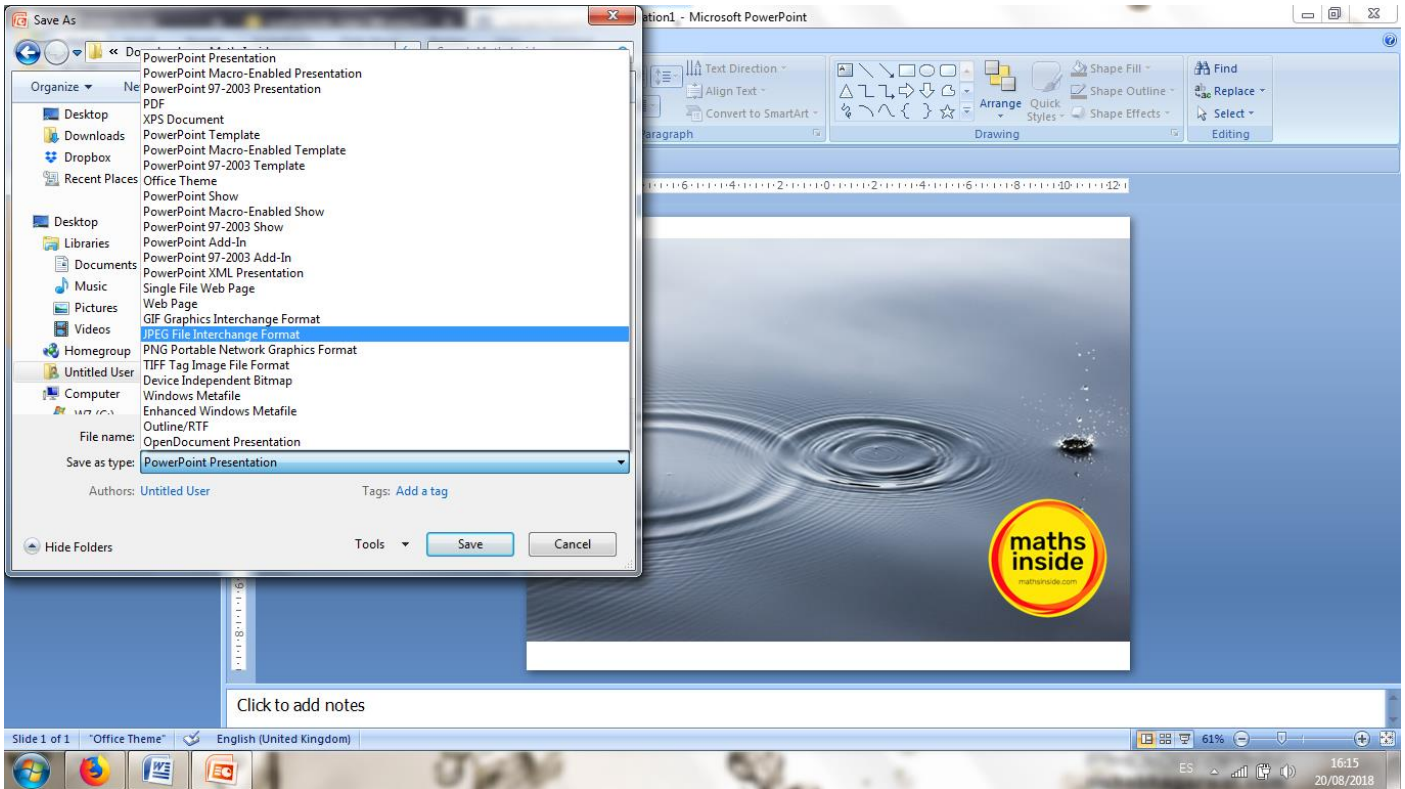




- position the sticker over your photo



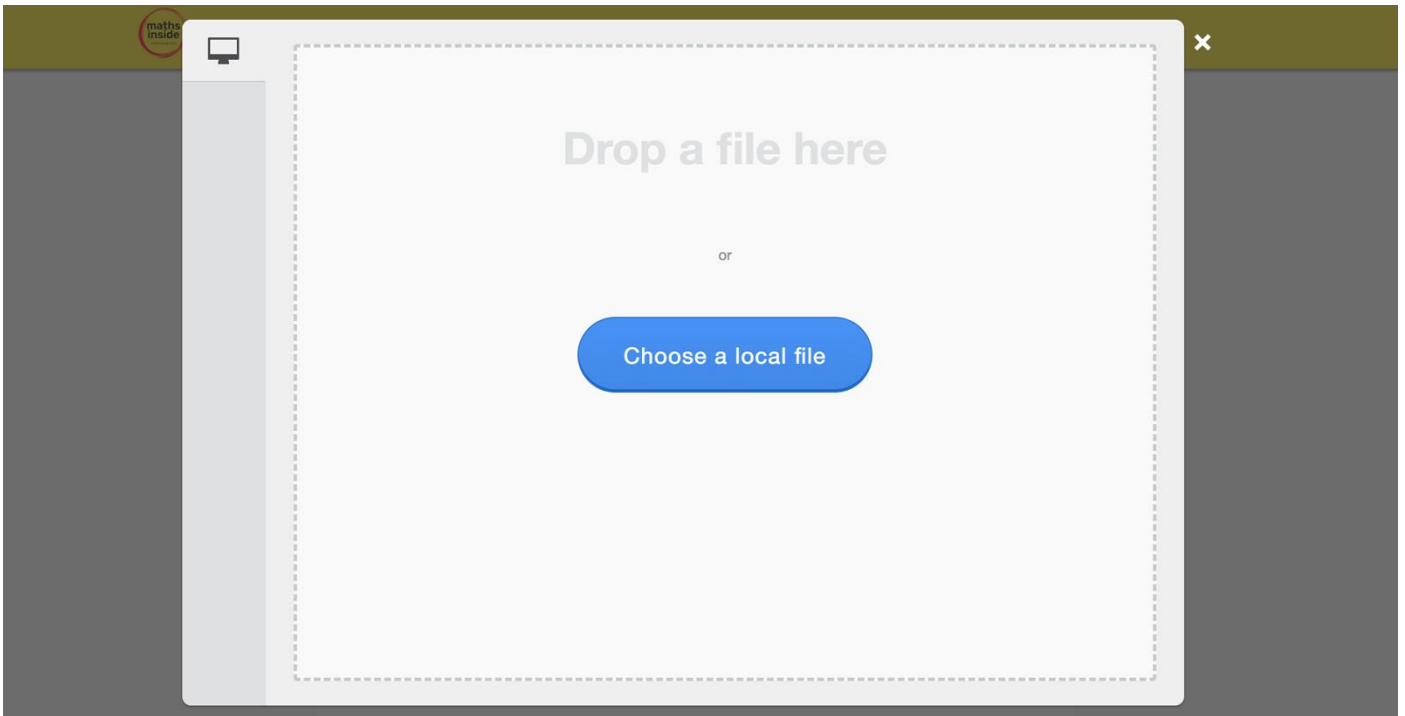
- save your image in either JPEG or PNG format



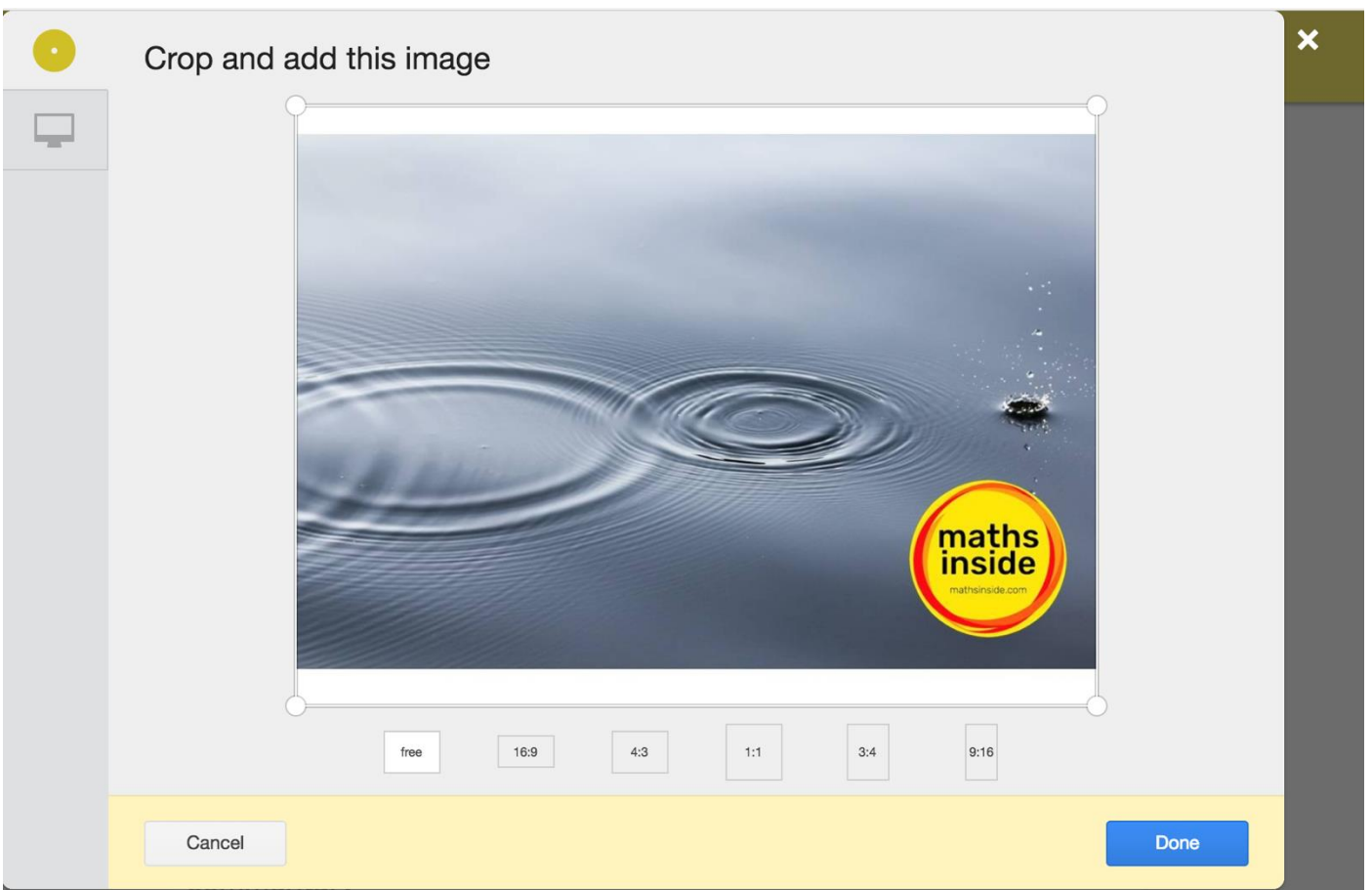
- *submission ready! Now we will get rid of the white background that can still be seen on the slide
- *click on *Choose your image with maths inside*

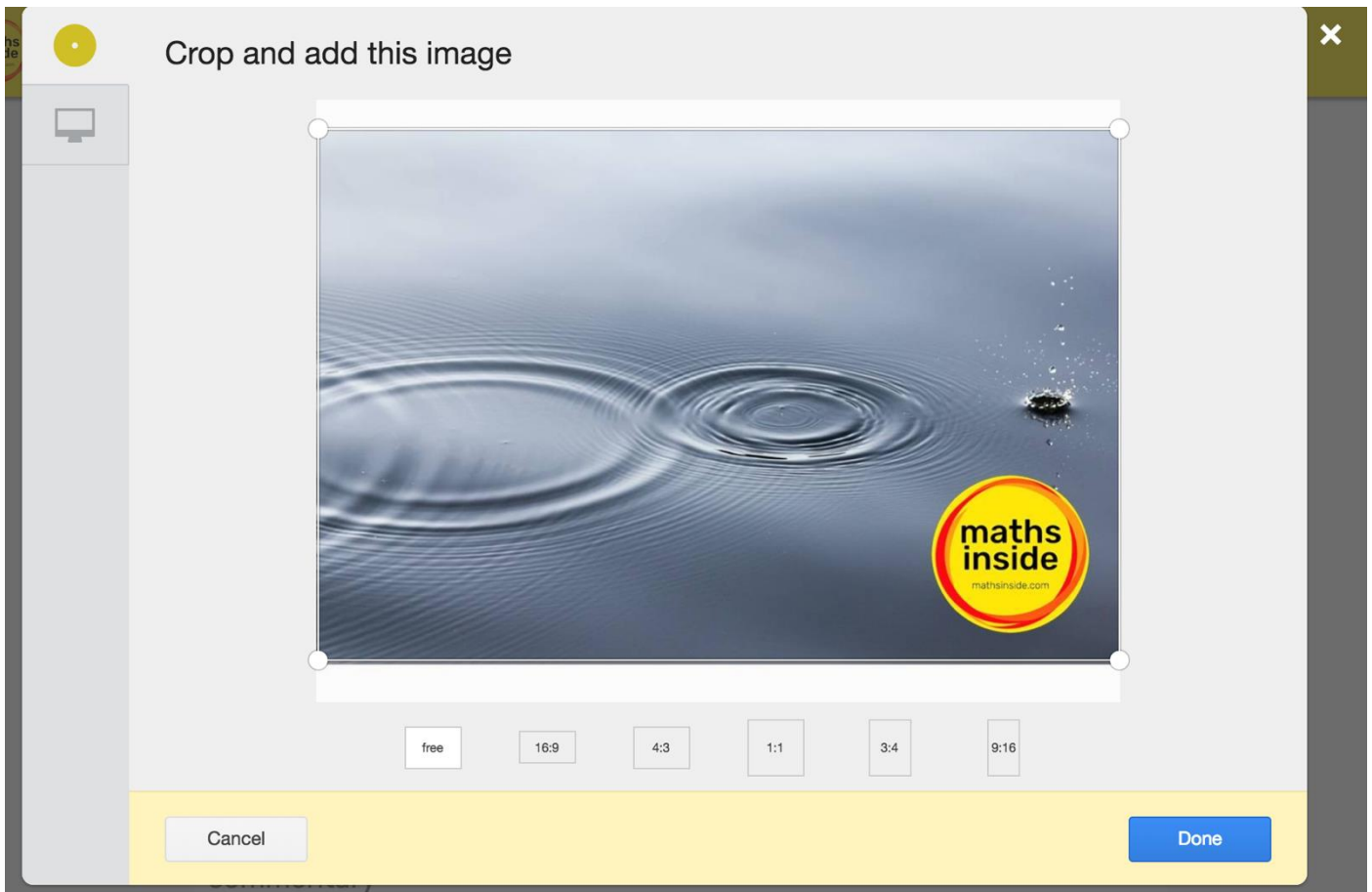
Choose your image with maths inside

- drop or choose a file from your computer/laptop



- the image can now be cropped by dragging the white circles in the corners





- click 'Done' and then submit at <http://mathsinside.com/submit/enter/>

Thanks for participating! Why not tell us on [Twitter](#) or on [Instagram](#)?

mathsinside